

news +++ ISH
15 to 19 March 2027

ISH

ISH 2027 is further expanding 'Green Roofs & Facades' as a platform for the future

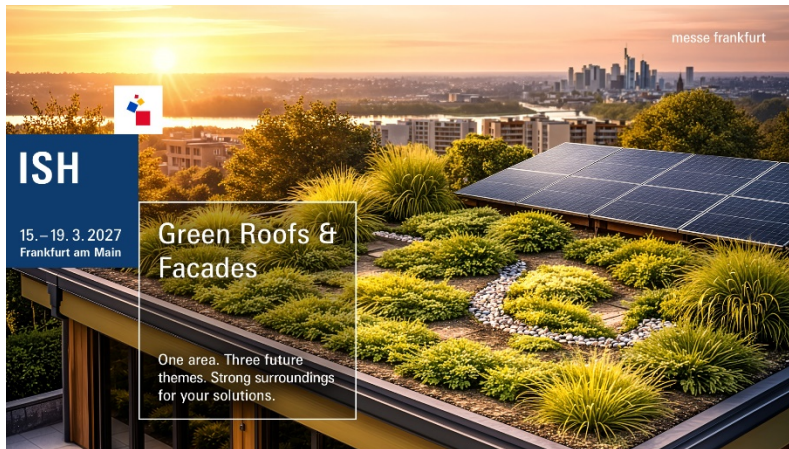
Frankfurt am Main, 9 June 2026. Green roofs and green facades improve the microclimate, rainwater and greywater are used as resources, and building envelopes are increasingly becoming active components of sustainable urban development. As the demands on climate-resilient cities evolve, so do the roles of architecture, building services engineering and urban infrastructure. Green roofs and facades, rainwater management and innovative façade systems are increasingly being considered as an integrated whole.

ISH 2027 will demonstrate just how closely these topics are now intertwined in the special 'Green Roofs & Facades' zone. From 15 to 19 March 2027, the world's leading trade fair for HVAC and water will bring together international suppliers, planners, architects, local authorities and investors in Frankfurt am Main, creating a space for solutions at the interface of climate adaptation, resource conservation and sustainable construction.

The special area focuses on three key themes: "Green Roofs & Facades" brings together approaches relating to green roofs and facades, solar integration, heat protection and biodiversity. "Urban Water Futures" is dedicated to rainwater management, retention, greywater reuse and cistern systems. "Metal Envelopes" also brings innovative metal façades, recyclable building envelopes, PV integration and design quality into focus. In doing so, ISH highlights just how closely building envelopes, water infrastructure and climate adaptation are now interlinked, and the role they play in sustainable architecture and future-proof cities.

The aim of the exhibition area is to highlight the interplay between the building envelope, water infrastructure and climate adaptation, and to open up new perspectives for sustainable architecture and future-proof cities. The special exhibition area is being developed in collaboration with leading industry partners such as the German Federal Association for Green Buildings (BuGG), the Federal Association for Industrial and Rainwater (fbr) and the Central Association for Sanitary, Heating and Air Conditioning (ZVSHK).

"Buildings today must perform significantly better than they did just a few years ago. Greening, rainwater management and smart building envelopes are increasingly becoming an integral part of future-proof architecture and urban infrastructure. With 'Green Roofs & Facades', we are creating an environment at ISH that brings these topics together and connects suppliers with relevant decision-makers from planning, architecture, building services engineering and local authorities," says Stefan Seitz, Head of Brand Management at ISH.



Focus on climate-resilient building envelopes: 'Green Roofs & Facades' will showcase solutions for greening, rainwater management and innovative façade systems at ISH 2027. Source: Messe Frankfurt Exhibition GmbH

Integrating building envelopes, water management and climate adaptation

Integration into the international ISH community creates additional connections between architecture, planning, building services engineering, the trades and local authorities. New demands on planning and building concepts are emerging, particularly where greening, rainwater management, energy efficiency and innovative building envelopes intersect. "Green Roofs & Facades" highlights these interconnections and brings together companies with key decision-makers from architecture, the construction industry, local authorities and building management.

With over 163,000 visitors from 149 countries and around 2,180 exhibitors, ISH ranks among the most important international platforms for innovative building solutions. Around 24 per cent of trade visitors are particularly interested in topics relating to water, sustainable building concepts and resource-efficient infrastructure. ISH thus offers a relevant environment for suppliers in the fields of rainwater management, building envelopes and climate-resilient infrastructure.



"Green Roofs & Facades" brings together architecture, building services engineering and urban infrastructure in a dedicated future-focused zone at

ISH 2027. Source: Messe Frankfurt Exhibition GmbH. Source: Messe Frankfurt Exhibition GmbH / Petra Weitz

This special area combines exhibition spaces with curated formats designed to facilitate knowledge transfer and exchange. A central Speakers' Corner, themed trails, best-practice presentations and guided tours promote interdisciplinary dialogue and allow visitors to experience first-hand the connections between greening, water and innovative façade systems.

Companies developing solutions for climate-resilient buildings and urban infrastructure can now register to take part in "Green Roofs & Facades". Further information is available at: <http://ish.messefrankfurt.com/green-roofs-facades>

ISH

The next ISH, the world's leading trade fair for HVAC and water, will take place from 15 to 19 March 2027 in Frankfurt am Main. www.ish.messefrankfurt.com

Building. Technology. Solutions.

Industry Insights 24/7 – One platform, all trends. Get fresh ideas from the world of smart building technology. Relevant. Neutral. Customizable: [Building. Technology. Solutions.](#)

Information and photographs for the press:

www.ish.messefrankfurt.com/press

Social media:

www.ish.messefrankfurt.com/facebook

www.ish.messefrankfurt.com/youtube

www.ish.messefrankfurt.com/linkedin

www.ish.messefrankfurt.com/instagram

[Building. Technology. Solutions. LinkedIn](#)



Your contact:

Stefanie Weitz

Phone: +49 69 75 75-5188

stefanie.weitz@messefrankfurt.com

Messe Frankfurt Exhibition GmbH

Ludwig-Erhard-Anlage 1

60327 Frankfurt am Main

www.messefrankfurt.com

Background information on Messe Frankfurt

www.messefrankfurt.com/background-information

Sustainability at Messe Frankfurt

www.messefrankfurt.com/sustainability-information